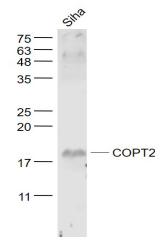


Product Datasheet

COPT2 antibody (orb182668)

Description	COPT2 antibody
Species/Host	Rabbit
Reactivity	Human
Conjugation	Unconjugated
Tested Applications	WB
Immunogen	KLH conjugated synthetic peptide derived from human COPT2 (1-100/143 aa)
Target	COPT2
Preservatives	0.01M TBS(pH7.4) with 1% rAlbumin, 0.03% Proclin300 and 50% Glycerol.
Form/Appearance	Liquid
Concentration	1mg/ml
Storage	Shipped at 4°C. Store at -20 °C for one year. Avoid repeated freeze/thaw cycles.
Note	For research use only
Isotype	IgG
Clonality	Polyclonal
MW	16 kDa
Uniprot ID	O15432
Dilution Range	WB=1:500-2000
Expiration Date	12 months from date of receipt.



Sample:
Siha(Human)
Cell Lysate at
30 ug...