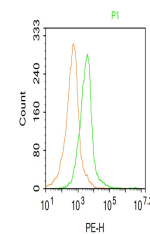


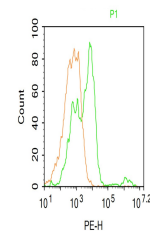
Product Datasheet

Contactin 1 antibody (orb182660)

Description	Contactin 1 antibody
Species/Host	Rabbit
Reactivity	Mouse
Conjugation	Unconjugated
Tested Applications	FC
Immunogen	KLH conjugated synthetic peptide derived from human Contactin 1 (151-250/1018 aa)
Target	Contactin 1
Preservatives	0.01M TBS(pH7.4) with 1% rAlbumin, 0.03% Proclin300 and 50% Glycerol.
Form/Appearance	Liquid
Concentration	1mg/ml
Storage	Shipped at 4°C. Store at -20 °C for one year. Avoid repeated freeze/thaw cycles.
Note	For research use only
Isotype	IgG
Clonality	Polyclonal
MW	111 kDa
Uniprot ID	Q12860
Dilution Range	Flow-Cyt=3ug/test, WB=1:500-2000, ELISA=1:5000-10000
Expiration Date	12 months from date of receipt.



Blank control:
Mouse brain.
Primary Anti...



Blank control:
Mouse kidney.
Primary Ant...