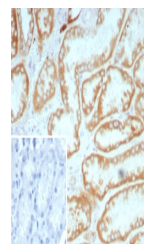


## Product Datasheet

# Biotin / Vitamin B7 / Vitamin H Antibody (orb1826354)

<b>Description</b>	This mAb recognizes both the free and protein-conjugated (either soluble or cell bound) form of biot...
<b>Species/Host</b>	Rabbit
<b>Reactivity</b>	All
<b>Conjugation</b>	Unconjugated
<b>Tested Applications</b>	FACS, IF, IHC-P, WB
<b>Immunogen</b>	Biotinylated sheep immunoglobulin was used as the immunogen for the Biotin antibody.
<b>Storage</b>	Aliquot the Biotin antibody and store frozen at -20°C or colder. Avoid repeated freeze-thaw cycles.
<b>Note</b>	For research use only
<b>Formula</b>	1 mg/ml in 1X PBS; BSA free, sodium azide free
<b>Isotype</b>	Rabbit IgG, kappa
<b>Clonality</b>	Recombinant
<b>Hazard Information</b>	This Biotin antibody is available for research use only.
<b>Dilution Range</b>	Flow cytometry: 1-2ug/million cells, Immunofluorescence: 1-2ug/ml, Western blot: 1-2ug/ml, Immunohistochemistry (FFPE): 1-2ug/ml for 30 minutes at RT
<b>Expiration Date</b>	12 months from date of receipt.



IHC staining of FFPE human kidney tissue...