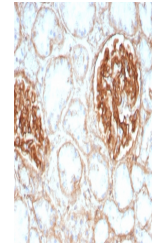


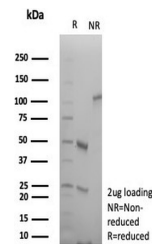
Product Datasheet

Integrin beta 1 Antibody / ITGB1 / CD29 (orb1826350)

Description	This CD29 mAb binds to the cell membrane of T- and B- lymphocytes, monocytes, platelets, fibroblasts...
Species/Host	Rabbit
Reactivity	Human
Conjugation	Unconjugated
Tested Applications	ELISA, IHC-P
Immunogen	Recombinant full-length human protein was used as the immunogen for the CD29 antibody.
Storage	Aliquot the CD29 antibody and store frozen at -20°C or colder. Avoid repeated freeze-thaw cycles.
Note	For research use only
Formula	0.2 mg/ml in 1X PBS with 0.1 mg/ml BSA (US sourced), 0.05% sodium azide
Isotype	Rabbit IgG, kappa
Clonality	Recombinant
Uniprot ID	P05556
Hazard Information	This CD29 antibody is available for research use only.
Dilution Range	ELISA (Order BSA-free format for coating), Immunohistochemistry (FFPE): 1-2ug/ml for 30 minutes at RT
Expiration Date	12 months from date of receipt.



IHC staining of FFPE human kidney tissue...



SDS-PAGE analysis of purified, BSA-free ...