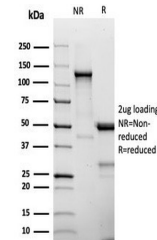


Product Datasheet

CD25 Antibody / IL2RA (orb1826310)

Description	CD25, or interleukin 2 (IL2) receptor alpha (IL2RA), and beta (IL2RB) chains, together with the comm...
Species/Host	Rabbit
Reactivity	Human
Conjugation	Unconjugated
Tested Applications	IHC-P
Immunogen	A recombinant partial protein (within amino acids 1-250) from the human protein was used as the immunogen for the CD25 antibody.
Storage	Aliquot the CD25 antibody and store frozen at -20°C or colder. Avoid repeated freeze-thaw cycles.
Note	For research use only
Formula	0.2 mg/ml in 1X PBS with 0.1 mg/ml BSA (US sourced), 0.05% sodium azide
Isotype	Rabbit IgG, kappa
Clonality	Recombinant
Uniprot ID	P01589
Hazard Information	This CD25 antibody is available for research use only.
Dilution Range	Immunohistochemistry (FFPE): 1-2ug/ml for 30 minutes at RT
Expiration Date	12 months from date of receipt.



SDS-PAGE analysis of purified, BSA-free ...