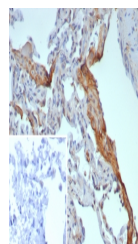


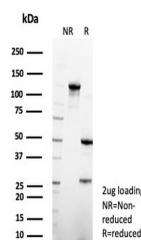
Product Datasheet

Surfactant protein D Antibody / SFTPD (orb1826271)

Description	Pulmonary surfactant is primarily responsible for lowering the surface tension at the air-liquid int...
Species/Host	Mouse
Reactivity	Human
Conjugation	Unconjugated
Tested Applications	IHC-P
Immunogen	A recombinant partial protein (within amino acids 200-375) from the human protein was used as the immunogen for the Surfactant protein D antibody.
Storage	Aliquot the Surfactant protein D antibody and store frozen at -20°C or colder. Avoid repeated freeze-thaw cycles.
Note	For research use only
Formula	0.2 mg/ml in 1X PBS with 0.1 mg/ml BSA (US sourced), 0.05% sodium azide
Isotype	Mouse IgG1, kappa
Clonality	Recombinant
Uniprot ID	P35247
Hazard Information	This Surfactant protein D antibody is available for research use only.
Dilution Range	Immunohistochemistry (FFPE): 1-2ug/ml for 30 minutes at RT
Expiration Date	12 months from date of receipt.



IHC staining of FFPE human lung tissue w...



SDS-PAGE analysis of purified, BSA-free ...