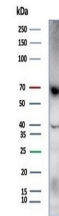


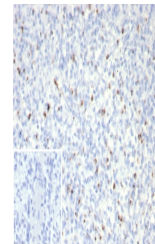
## Product Datasheet

### Perforin Antibody / PRF1 (orb1826266)

<b>Description</b>	Perforin is a pore-forming protein that leads to osmotic lysis of the target cells and subsequently ...
<b>Species/Host</b>	Mouse
<b>Reactivity</b>	Human
<b>Conjugation</b>	Unconjugated
<b>Tested Applications</b>	IHC-P, WB
<b>Immunogen</b>	A recombinant human Perforin-1 protein fragment (within amino acids 355-555) was used as the immunogen for the PRF1 antibody.
<b>Storage</b>	Aliquot the PRF1 antibody and store frozen at -20°C or colder. Avoid repeated freeze-thaw cycles.
<b>Note</b>	For research use only
<b>Formula</b>	0.2 mg/ml in 1X PBS with 0.1 mg/ml BSA (US sourced), 0.05% sodium azide
<b>Isotype</b>	Mouse IgG1, kappa
<b>Clonality</b>	Recombinant
<b>Uniprot ID</b>	<b>P14222</b>
<b>Hazard Information</b>	This PRF1 antibody is available for research use only.
<b>Dilution Range</b>	Western blot: 1-2ug/ml, Immunohistochemistry (FFPE): 1-2ug/ml for 30 minutes at RT
<b>Expiration Date</b>	12 months from date of receipt.



Western blot testing of human HDLM-2 cel...



IHC staining of FFPE human spleen tissue...