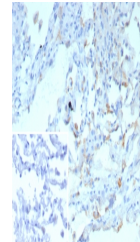


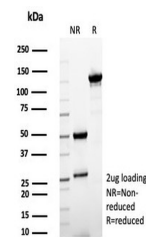
Product Datasheet

Surfactant protein D Antibody / SFTPD (orb1826246)

| | |
|----------------------------|---|
| Description | Pulmonary surfactant is primarily responsible for lowering the surface tension at the air-liquid int... |
| Species/Host | Mouse |
| Reactivity | Human |
| Conjugation | Unconjugated |
| Tested Applications | IHC-P |
| Immunogen | A recombinant partial protein (within amino acids 200-375) from the human protein was used as the immunogen for the SFTPD antibody. |
| Storage | Aliquot the SFTPD antibody and store frozen at -20°C or colder. Avoid repeated freeze-thaw cycles. |
| Note | For research use only |
| Formula | 1 mg/ml in 1X PBS; BSA free, sodium azide free |
| Isotype | Mouse IgG1, kappa |
| Clonality | Recombinant |
| Uniprot ID | P35247 |
| Hazard Information | This SFTPD antibody is available for research use only. |
| Dilution Range | Immunohistochemistry (FFPE): 1-2ug/ml for 30 minutes at RT |
| Expiration Date | 12 months from date of receipt. |



IHC staining of FFPE human lung tissue w...



SDS-PAGE analysis of purified, BSA-free ...