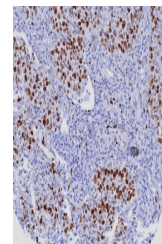


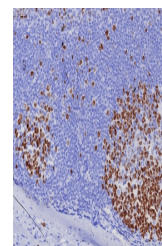
Product Datasheet

Ki-67 Antibody (orb1826184)

Description	Ki-67 antigen is a nuclear, non-histone protein that is present in all stages of the cell cycle exce...
Species/Host	Rabbit
Reactivity	Human
Conjugation	Unconjugated
Tested Applications	IHC-P
Immunogen	A recombinant fragment corresponding to the C-terminus of human Ki67 protein was used as the immunogen for the Ki-67 antibody.
Storage	Aliquot the Ki-67 antibody and store frozen at -20°C or colder. Avoid repeated freeze-thaw cycles.
Note	For research use only
Formula	0.2 mg/ml in 1X PBS with 0.1 mg/ml BSA (US sourced), 0.05% sodium azide
Isotype	Rabbit IgG, kappa
Clonality	Recombinant
Uniprot ID	P46013
Hazard Information	This Ki-67 antibody is available for research use only.
Dilution Range	Immunohistochemistry (FFPE): 1-2ug/ml for 30 minutes at RT
Expiration Date	12 months from date of receipt.



IHC staining of FFPE human lung adenocar...



IHC staining of FFPE human tonsil tissue...