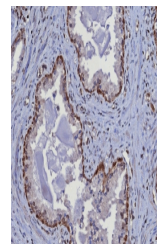


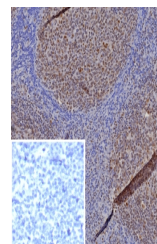
Product Datasheet

MGMT Antibody (orb1826177)

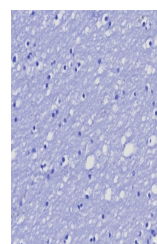
Description	Cancer chemotherapeutic alkylating agents (e.g. BCNU,) act by inducing formation of lethal cross-link...
Species/Host	Rabbit
Reactivity	Human
Conjugation	Unconjugated
Tested Applications	IHC-P
Immunogen	A recombinant partial protein (within amino acids 1-100) from the human protein was used as the immunogen for the MGMT antibody.
Storage	Aliquot the MGMT antibody and store frozen at -20°C or colder. Avoid repeated freeze-thaw cycles.
Note	For research use only
Formula	1 mg/ml in 1X PBS; BSA free, sodium azide free
Isotype	Rabbit IgG, kappa
Clonality	Monoclonal
Uniprot ID	P16455
Hazard Information	This MGMT antibody is available for research use only.
Dilution Range	Immunohistochemistry (FFPE): 1-2ug/ml for 30 minutes at RT
Expiration Date	12 months from date of receipt.



IHC staining of FFPE human prostate tiss...



IHC staining of FFPE human tonsil tissue...



Negative control: IHC testing of FFPE hu...