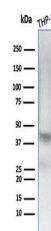


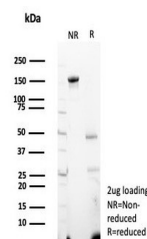
Product Datasheet

WT1 Antibody / Wilms Tumor 1 (orb1826160)

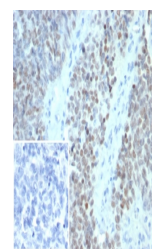
Description	The WT1 gene located at chromosome 11p13 codes for a transcription factor, a DNA-binding nucleoprote...
Species/Host	Mouse
Reactivity	Human
Conjugation	Unconjugated
Tested Applications	ELISA, IHC-P, WB
Immunogen	A recombinant partial protein (within amino acids 150-350) from the human protein was used as the immunogen for the Wilms Tumor 1 antibody.
Storage	Aliquot the Wilms Tumor 1 antibody and store frozen at -20°C or colder. Avoid repeated freeze-thaw cycles.
Note	For research use only
Formula	0.2 mg/ml in 1X PBS with 0.1 mg/ml BSA (US sourced), 0.05% sodium azide
Isotype	Mouse IgG1, kappa
Clonality	Monoclonal
Uniprot ID	P19544
Hazard Information	This Wilms Tumor 1 antibody is available for research use only.
Dilution Range	ELISA (Order BSA-free format for coating),Western blot: 1-2ug/ml,Immunohistochemistry (FFPE): 1-2ug/ml for 30 minutes at RT
Expiration Date	12 months from date of receipt.



Western blot testing of human THP-1 cell...



SDS-PAGE analysis of purified, BSA-free ...



IHC staining of FFPE human ovarian carci...