

Product Datasheet

SI-CLP Antibody / CHID1 / Chitinase Domain Containing 1 (orb1826112)

Description	SI-CLP (stabilin-1 interacting chitinase-like), also known as CHID1 (chitinase domain-containing protein 1), is a 393 amino acid secreted protein that belongs to the glycosyl hydrolase 18 family. SI-CLP interacts with STAB1 and localizes to lysosome in cells of monocytic, T, B and epithelial origin. SI-CLP is a saccharide- and LPS-binding protein with possible roles in pathogen sensing and endotoxin neutralization. Ligand-binding specificity relates to the length of the oligosaccharides, with preference for chitotetraose (in vitro). The SI-CLP protein is up-regulated by IL4/interleukin-4 and dexamethasone in the macrophages, and is also up-regulated by glucocorticoid. Existing as three alternatively spliced isoforms, the SI-CLP gene is conserved in chimpanzee, canine, bovine, mouse, rat, chicken, zebrafish, fruit fly, mosquito, <i>A. thaliana</i> and rice, and maps to human chromosome 11p15.5.
Species/Host	Mouse
Reactivity	Human
Conjugation	Unconjugated
Tested Applications	IHC-P
Immunogen	Recombinant full-length human SI-CLP protein was used as the immunogen for the CHID1 antibody.
Storage	Aliquot the SI-CLP antibody and store frozen at -20°C or colder. Avoid repeated freeze-thaw cycles.
Note	For research use only
Formula	0.2 mg/ml in 1X PBS with 0.1 mg/ml BSA (US sourced), 0.05% sodium azide
Isotype	Mouse IgG1, kappa
Clonality	Monoclonal

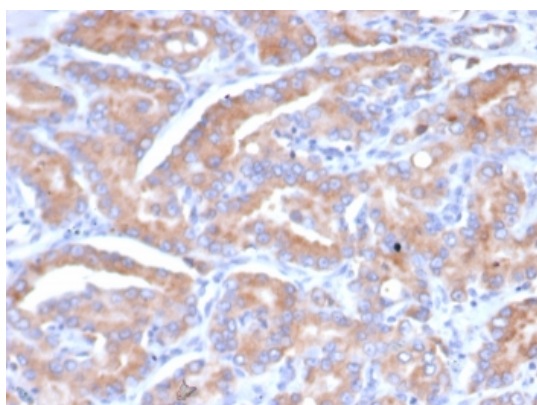
Biorbyt Ltd.

7 Signet Court, Swann's Road,
Cambridge, CB5 8LA, United Kingdom
Email: info@biorbyt.com, support@biorbyt.com
Phone: [+44 \(0\) 1223 859-353](tel:+44(0)1223859353) | Fax: [+1 \(415\) 651-8558](tel:+1(415)6518558)

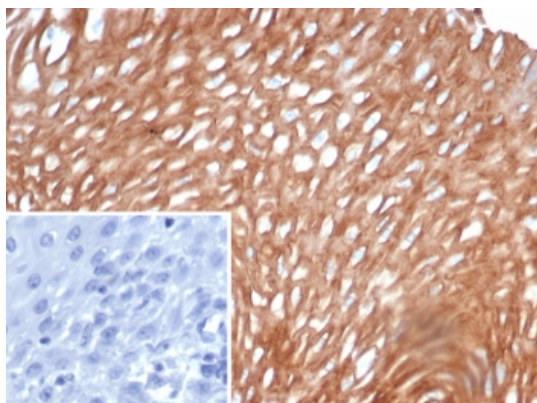
Biorbyt LLC.

68 TW Alexander Drive,
Durham, NC, 27713, United States
Email: info@biorbyt.com, support@biorbyt.com
Phone: [+1 \(415\) 906-5211](tel:+1(415)9065211) | Fax: [+1 \(415\) 651-8558](tel:+1(415)6518558)

Clone Number	CHID1/6368
Uniprot ID	Q9BWS9
Hazard Information	This SI-CLP antibody is available for research use only.
Dilution Range	Immunohistochemistry (FFPE): 1-2ug/ml for 30 minutes at RT
Expiration Date	12 months from date of receipt.



IHC staining of FFPE human prostate tissue with SI-CLP antibody (clone CHID1/6368) HIER: boil tissue sections in pH9 10 mM Tris with 1 mM EDTA for 20 min and allow to cool before testing.



IHC staining of FFPE human esophagus tissue with SI-CLP antibody (clone CHID1/6368) Inset: PBS used in place of primary Ab (secondary Ab negative control). HIER: boil tissue sections in pH9 10 mM Tris with 1 mM EDTA for 20 min and allow to cool before testing.

Biorbyt Ltd.

7 Signet Court, Swann's Road,
Cambridge, CB5 8LA, United Kingdom
Email: info@biorbyt.com, support@biorbyt.com
Phone: [+44 \(0\) 1223 859-353](tel:+44(0)1223859353) | Fax: [+1 \(415\) 651-8558](tel:+1(415)6518558)

Biorbyt LLC.

68 TW Alexander Drive,
Durham, NC, 27713, United States
Email: info@biorbyt.com, support@biorbyt.com
Phone: [+1 \(415\) 906-5211](tel:+1(415)9065211) | Fax: [+1 \(415\) 651-8558](tel:+1(415)6518558)