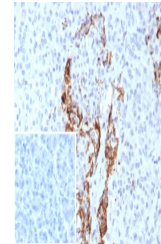


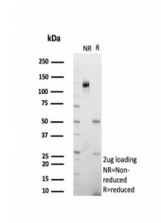
Product Datasheet

Insulin Antibody (orb1826101)

Description	Recognizes a polypeptide which is identified as insulin, a 51-amino acid polypeptide composed of A a...
Species/Host	Mouse
Reactivity	Human
Conjugation	Unconjugated
Tested Applications	IHC-P
Immunogen	Recombinant full-length human Insulin protein was used as the immunogen for the Insulin antibody.
Storage	Aliquot the Insulin antibody and store frozen at -20°C or colder. Avoid repeated freeze-thaw cycles.
Note	For research use only
Formula	0.2 mg/ml in 1X PBS with 0.1 mg/ml BSA (US sourced), 0.05% sodium azide
Isotype	Mouse IgG2a, kappa
Clonality	Recombinant
Uniprot ID	P01308
Hazard Information	This Insulin antibody is available for research use only.
Dilution Range	Immunohistochemistry (FFPE): 0.1-0.2ug/ml (No special pretreatment is required for staining of FFPE tissue)
Expiration Date	12 months from date of receipt.



IHC staining of FFPE human pancreas tiss...



SDS-PAGE analysis of purified, BSA-free ...