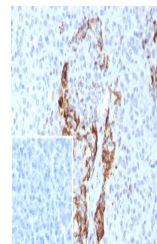


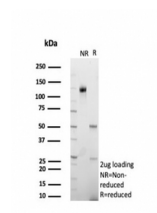
## Product Datasheet

### Insulin Antibody (orb1826099)

<b>Description</b>	Recognizes a polypeptide which is identified as insulin, a 51-amino acid polypeptide composed of A a...
<b>Species/Host</b>	Mouse
<b>Reactivity</b>	Human
<b>Conjugation</b>	Unconjugated
<b>Tested Applications</b>	IHC-P
<b>Immunogen</b>	Recombinant full-length human Insulin protein was used as the immunogen for the Insulin antibody.
<b>Storage</b>	Aliquot the Insulin antibody and store frozen at -20°C or colder. Avoid repeated freeze-thaw cycles.
<b>Note</b>	For research use only
<b>Formula</b>	1 mg/ml in 1X PBS; BSA free, sodium azide free
<b>Isotype</b>	Mouse IgG2a, kappa
<b>Clonality</b>	Recombinant
<b>Uniprot ID</b>	<b>P01308</b>
<b>Hazard Information</b>	This Insulin antibody is available for research use only.
<b>Dilution Range</b>	Immunohistochemistry (FFPE): 0.1-0.2ug/ml (No special pretreatment is required for staining of FFPE tissue)
<b>Expiration Date</b>	12 months from date of receipt.



IHC staining of FFPE human pancreas tiss...



SDS-PAGE analysis of purified, BSA-free ...