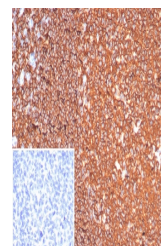


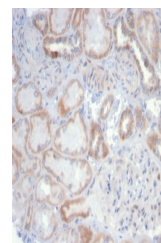
Product Datasheet

CD20 Antibody (orb1826073)

Description	Recognizes a protein of 30-33kDa, which is identified as CD20. It is a non-Ig differentiation antigen...
Species/Host	Rabbit
Reactivity	Human
Conjugation	Unconjugated
Tested Applications	IHC-P, WB
Immunogen	A recombinant partial protein (within amino acids 97-297) from the human protein was used as the immunogen for the CD20 antibody.
Storage	Aliquot the CD20 antibody and store frozen at -20°C or colder. Avoid repeated freeze-thaw cycles.
Note	For research use only
Formula	0.2 mg/ml in 1X PBS with 0.1 mg/ml BSA (US sourced), 0.05% sodium azide
Isotype	Rabbit IgG, kappa
Clonality	Recombinant
Uniprot ID	P11836
Hazard Information	This CD20 antibody is available for research use only.
Dilution Range	Western blot: 1-2ug/ml, Immunohistochemistry (FFPE): 1-2ug/ml for 30 minutes at RT
Expiration Date	12 months from date of receipt.



IHC staining of FFPE human tonsil tissue...



IHC staining of FFPE human kidney tissue...



Western blot testing of human Raji cell ...