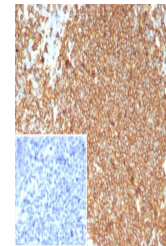


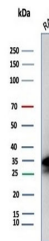
Product Datasheet

CD20 Antibody (orb1826068)

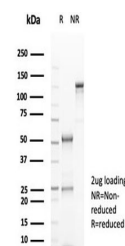
Description	Recognizes a protein of 30-33kDa, which is identified as CD20. It is a non-Ig differentiation antigen...
Species/Host	Rabbit
Reactivity	Human
Conjugation	Unconjugated
Tested Applications	IHC-P, WB
Immunogen	A recombinant partial protein (within amino acids 200-297) from the human protein was used as the immunogen for the recombinant CD20 antibody.
Storage	Aliquot the recombinant CD20 antibody and store frozen at -20°C or colder. Avoid repeated freeze-thaw cycles.
Note	For research use only
Formula	0.2 mg/ml in 1X PBS with 0.1 mg/ml BSA (US sourced), 0.05% sodium azide
Isotype	Rabbit IgG, kappa
Clonality	Recombinant
Uniprot ID	P11836
Hazard Information	This recombinant CD20 antibody is available for research use only.
Dilution Range	Western blot: 2-4ug/ml, Immunohistochemistry (FFPE): 1-2ug/ml for 30 minutes at RT
Expiration Date	12 months from date of receipt.



IHC staining of FFPE human tonsil tissue...



Western blot testing of human Raji cell ...



SDS-PAGE analysis of purified, BSA-free ...