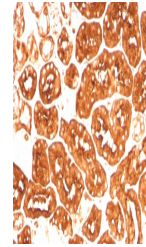


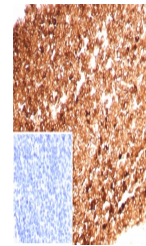
Product Datasheet

FTH1 Antibody / Ferritin heavy chain (orb1826065)

Description	Mammalian ferritins consist of 24 subunits made up of 2 types of poly-peptide chains, ferritin heavy...
Species/Host	Rabbit
Reactivity	Human
Conjugation	Unconjugated
Tested Applications	IHC-P
Immunogen	A recombinant human FTH1 protein fragment (within amino acids 58-180) was used as the immunogen for the recombinant Ferritin Heavy Chain antibody.
Storage	Aliquot the recombinant Ferritin Heavy Chain antibody and store frozen at -20°C or colder. Avoid repeated freeze-thaw cycles.
Note	For research use only
Formula	0.2 mg/ml in 1X PBS with 0.1 mg/ml BSA (US sourced), 0.05% sodium azide
Isotype	Rabbit IgG, kappa
Clonality	Recombinant
Uniprot ID	P02794
Hazard Information	This recombinant Ferritin Heavy Chain antibody is available for research use only.
Dilution Range	Immunohistochemistry (FFPE): 1-2ug/ml for 30 minutes at RT
Expiration Date	12 months from date of receipt.



IHC staining of FFPE human kidney tissue...



IHC staining of FFPE human tonsil tissue...