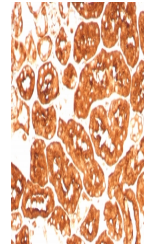


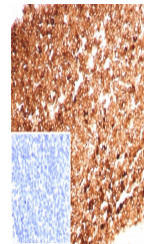
## Product Datasheet

### FTH1 Antibody / Ferritin heavy chain (orb1826063)

<b>Description</b>	Mammalian ferritins consist of 24 subunits made up of 2 types of poly-peptide chains, ferritin heavy...
<b>Species/Host</b>	Rabbit
<b>Reactivity</b>	Human
<b>Conjugation</b>	Unconjugated
<b>Tested Applications</b>	IHC-P
<b>Immunogen</b>	A recombinant human FTH1 protein fragment (within amino acids 58-180) was used as the immunogen for the recombinant Ferritin Heavy Chain antibody.
<b>Storage</b>	Aliquot the recombinant Ferritin Heavy Chain antibody and store frozen at -20°C or colder. Avoid repeated freeze-thaw cycles.
<b>Note</b>	For research use only
<b>Formula</b>	1 mg/ml in 1X PBS; BSA free, sodium azide free
<b>Isotype</b>	Rabbit IgG, kappa
<b>Clonality</b>	Recombinant
<b>Uniprot ID</b>	<b>P02794</b>
<b>Hazard Information</b>	This recombinant Ferritin Heavy Chain antibody is available for research use only.
<b>Dilution Range</b>	Immunohistochemistry (FFPE): 1-2ug/ml for 30 minutes at RT
<b>Expiration Date</b>	12 months from date of receipt.



IHC staining of FFPE human kidney tissue...



IHC staining of FFPE human tonsil tissue...