

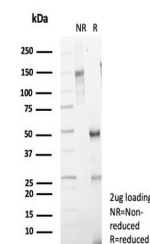
Product Datasheet

Mammaglobin A Antibody / SCGB2A2 (orb1826062)

Description	Mammaglobin, 10 kDa, is a cytoplasmic protein, a mammary-specific member of the uteroglobin family. ...
Species/Host	Rabbit
Reactivity	Human
Conjugation	Unconjugated
Tested Applications	IHC-P
Immunogen	A recombinant fragment of human Mammaglobin/SCGB2A2 protein was used as the immunogen for the Mammaglobin antibody.
Storage	Aliquot the Mammaglobin antibody and store frozen at -20°C or colder. Avoid repeated freeze-thaw cycles.
Note	For research use only
Formula	0.2 mg/ml in 1X PBS with 0.1 mg/ml BSA (US sourced), 0.05% sodium azide
Isotype	Rabbit IgG, kappa
Clonality	Recombinant
Uniprot ID	Q13296
Hazard Information	This Mammaglobin antibody is available for research use only.
Dilution Range	Immunohistochemistry (FFPE): 1-2ug/ml for 30 minutes at RT
Expiration Date	12 months from date of receipt.



IHC staining of FFPE human lactating bre...



SDS-PAGE analysis of purified, BSA-free ...