

Product Datasheet

Cyclin D1 Antibody / CCND1 (orb1826048)

Description Recognizes a protein of 36kDa, identified as cyclin D1. Cyclin D1, one of the key cell cycle regulat...

Species/Host Mouse

Reactivity Human

Conjugation Unconjugated

Tested Applications IHC-P

Immunogen A recombinant partial protein (within amino acids 200-295) from the human protein was used as the immunogen for the Cyclin D1 antibody.

Storage Aliquot the Cyclin D1 antibody and store frozen at -20°C or colder. Avoid repeated freeze-thaw cycles.

Note For research use only

Formula 1 mg/ml in 1X PBS; BSA free, sodium azide free

Isotype Mouse IgG2a, kappa

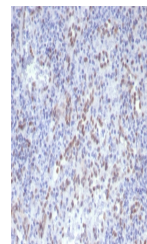
Clonality Monoclonal

Uniprot ID [P24385](#)

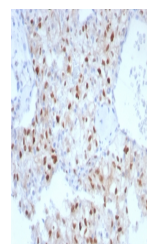
Hazard Information This Cyclin D1 antibody is available for research use only.

Dilution Range Immunohistochemistry (FFPE): 1-2ug/ml for 30 minutes at RT

Expiration Date 12 months from date of receipt.



IHC staining of FFPE human spleen stained with Cyclin D1 antibody



IHC staining of FFPE human renal cell carcinoma stained with Cyclin D1 antibody