

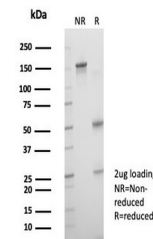
## Product Datasheet

# Alpha B Crystallin Antibody / CRYAB (orb1826016)

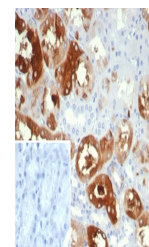
<b>Description</b>	Crystallins are the major proteins of the vertebrate eye lens, where they maintain the transparency ...
<b>Species/Host</b>	Mouse
<b>Reactivity</b>	Human
<b>Conjugation</b>	Unconjugated
<b>Tested Applications</b>	IHC-P, WB
<b>Immunogen</b>	A recombinant partial protein (within amino acids 1-175) from the human protein was used as the immunogen for the CRYAB antibody.
<b>Storage</b>	Aliquot the CRYAB antibody and store frozen at -20°C or colder. Avoid repeated freeze-thaw cycles.
<b>Note</b>	For research use only
<b>Formula</b>	0.2 mg/ml in 1X PBS with 0.1 mg/ml BSA (US sourced), 0.05% sodium azide
<b>Isotype</b>	Mouse IgG1, kappa
<b>Clonality</b>	Monoclonal
<b>Uniprot ID</b>	<b>P02511</b>
<b>Hazard Information</b>	This CRYAB antibody is available for research use only.
<b>Dilution Range</b>	Western blot: 1-2ug/ml, Immunohistochemistry (FFPE): 1-2ug/ml for 30 minutes at RT
<b>Expiration Date</b>	12 months from date of receipt.



Western blot testing of human HeLa cell ...



SDS-PAGE analysis of purified, BSA-free ...



IHC staining of FFPE human kidney tissue...