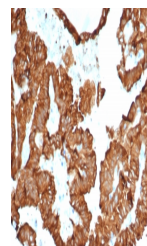


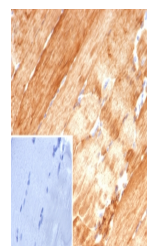
Product Datasheet

Alpha B Crystallin Antibody / CRYAB (orb1826014)

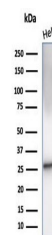
Description	Crystallins are the major proteins of the vertebrate eye lens, where they maintain the transparency ...
Species/Host	Mouse
Reactivity	Human
Conjugation	Unconjugated
Tested Applications	IHC-P, WB
Immunogen	Recombinant human full-length CRYAB protein was used as the immunogen for the CRYAB antibody.
Storage	Aliquot the CRYAB antibody and store frozen at -20°C or colder. Avoid repeated freeze-thaw cycles.
Note	For research use only
Formula	0.2 mg/ml in 1X PBS with 0.1 mg/ml BSA (US sourced), 0.05% sodium azide
Isotype	Mouse IgG2, kappa
Clonality	Monoclonal
Uniprot ID	P02511
Hazard Information	This CRYAB antibody is available for research use only.
Dilution Range	Western blot: 1-2ug/ml, Immunohistochemistry (FFPE): 1-2ug/ml for 30 minutes at RT
Expiration Date	12 months from date of receipt.



IHC staining of FFPE human kidney cancer...



IHC staining of FFPE human skeletal musc...



Western blot testing of human HeLa cell ...