

## Product Datasheet

### SM22 alpha Antibody / Transgelin (orb1825958)

**Description** This mAb recognizes a 22kDa protein, identified as Transgelin, also designated SM22-alpha. It may cr...

**Species/Host** Mouse

**Reactivity** Human

**Conjugation** Unconjugated

**Tested Applications** IHC-P

**Immunogen** Recombinant full-length human Transgelin (TAGLN) protein was used as the immunogen for the recombinant Transgelin antibody.

**Storage** Aliquot the recombinant Transgelin antibody and store frozen at -20°C or colder. Avoid repeated freeze-thaw cycles.

**Note** For research use only

**Formula** 1 mg/ml in 1X PBS; BSA free, sodium azide free

**Isotype** Mouse IgG2b, kappa

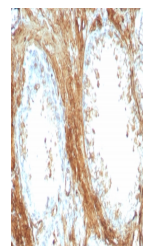
**Clonality** Recombinant

**Uniprot ID** [Q01995](#)

**Hazard Information** This recombinant Transgelin antibody is available for research use only.

**Dilution Range** Immunohistochemistry (FFPE): 0.5-1ug/ml

**Expiration Date** 12 months from date of receipt.



IHC staining of FFPE human prostate carc...