

Product Datasheet

NSE Antibody / Neuron Specific Enolase (orb1825888)

Description This monoclonal antibody recognizes a protein of about 50kDa, which is identified as gamma-enolase. ...

Species/Host Rabbit

Reactivity Human

Conjugation Unconjugated

Tested Applications IHC-P

Immunogen A recombinant fragment of human NSE gamma (within amino acids 234-434) was used as the immunogen for the NSE antibody.

Storage Aliquot the NSE antibody and store frozen at -20°C or colder. Avoid repeated freeze-thaw cycles.

Note For research use only

Formula 0.2 mg/ml in 1X PBS with 0.1 mg/ml BSA (US sourced), 0.05% sodium azide

Isotype Rabbit IgG, kappa

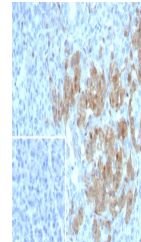
Clonality Recombinant

Uniprot ID [P09104](#)

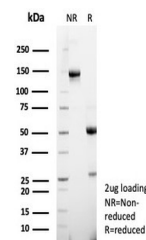
Hazard Information This NSE antibody is available for research use only.

Dilution Range Immunohistochemistry (FFPE): 1-2ug/ml for 30 minutes at RT

Expiration Date 12 months from date of receipt.



IHC staining of FFPE human pancreas tiss...



SDS-PAGE analysis of purified, BSA-free ...