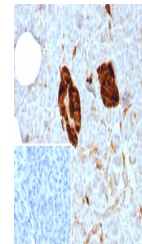


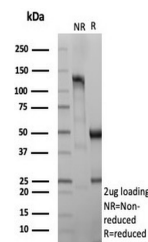
Product Datasheet

NSE Antibody / Neuron Specific Enolase (orb1825885)

Description	This monoclonal antibody recognizes a protein of about 50kDa, which is identified as gamma-enolase. ...
Species/Host	Rabbit
Reactivity	Human
Conjugation	Unconjugated
Tested Applications	IHC-P
Immunogen	A recombinant fragment of human NSE gamma (within amino acids 416-433) was used as the immunogen for the NSE antibody.
Storage	Aliquot the NSE antibody and store frozen at -20°C or colder. Avoid repeated freeze-thaw cycles.
Note	For research use only
Formula	0.2 mg/ml in 1X PBS with 0.1 mg/ml BSA (US sourced), 0.05% sodium azide
Isotype	Rabbit IgG, kappa
Clonality	Recombinant
Uniprot ID	P09104
Hazard Information	This NSE antibody is available for research use only.
Dilution Range	Immunohistochemistry (FFPE): 1-2ug/ml for 30 minutes at RT
Expiration Date	12 months from date of receipt.



IHC staining of FFPE human pancreas tiss...



SDS-PAGE analysis of purified, BSA-free ...