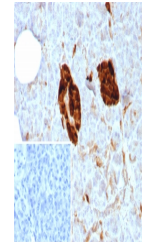


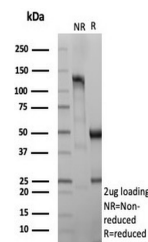
## Product Datasheet

# NSE Antibody / Neuron Specific Enolase (orb1825884)

<b>Description</b>	This monoclonal antibody recognizes a protein of about 50kDa, which is identified as gamma-enolase. ...
<b>Species/Host</b>	Rabbit
<b>Reactivity</b>	Human
<b>Conjugation</b>	Unconjugated
<b>Tested Applications</b>	IHC-P
<b>Immunogen</b>	A recombinant fragment of human NSE gamma (within amino acids 416-433) was used as the immunogen for the NSE antibody.
<b>Storage</b>	Aliquot the NSE antibody and store frozen at -20°C or colder. Avoid repeated freeze-thaw cycles.
<b>Note</b>	For research use only
<b>Formula</b>	0.2 mg/ml in 1X PBS with 0.1 mg/ml BSA (US sourced), 0.05% sodium azide
<b>Isotype</b>	Rabbit IgG, kappa
<b>Clonality</b>	Recombinant
<b>Uniprot ID</b>	<b>P09104</b>
<b>Hazard Information</b>	This NSE antibody is available for research use only.
<b>Dilution Range</b>	Immunohistochemistry (FFPE): 1-2ug/ml for 30 minutes at RT
<b>Expiration Date</b>	12 months from date of receipt.



IHC staining of FFPE human pancreas tiss...



SDS-PAGE analysis of purified, BSA-free ...