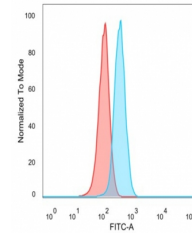


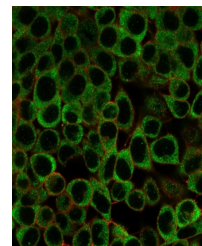
Product Datasheet

YBX3 Antibody / Y-box-binding protein 3 (orb1825866)

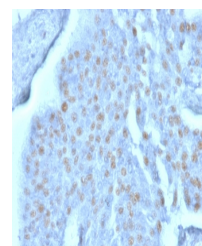
Description	Predicted to enable DNA-binding transcription factor activity, RNA polymerase II-specific and RNA po...
Species/Host	Mouse
Reactivity	Human
Conjugation	Unconjugated
Tested Applications	FACS, IF, IHC-P, WB
Immunogen	Recombinant full-length human protein was used as the immunogen for the Y-box-binding protein 3 antibody.
Storage	Aliquot the Y-box-binding protein 3 antibody and store frozen at -20°C or colder. Avoid repeated freeze-thaw cycles.
Note	For research use only
Formula	0.2 mg/ml in 1X PBS with 0.1 mg/ml BSA (US sourced), 0.05% sodium azide
Isotype	Mouse IgG2b
Clonality	Monoclonal
Uniprot ID	P16989
Hazard Information	This Y-box-binding protein 3 antibody is available for research use only.
Dilution Range	Flow cytometry: 1-2ug/million cells, Immunofluorescence: 1-2ug/ml, Western blot: 1-2ug/ml, Immunohistochemistry (FFPE): 1-2ug/ml for 30 minutes at RT
Expiration Date	12 months from date of receipt.



Flow cytometry testing of PFA-fixed huma...



Immunofluorescent staining of PFA-fixed ...



IHC staining of FFPE human bladder carci...