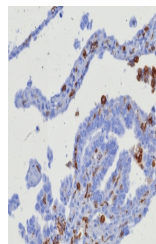


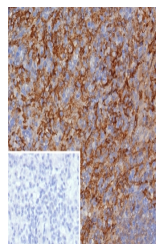
## Product Datasheet

### CD163 Antibody (orb1825856)

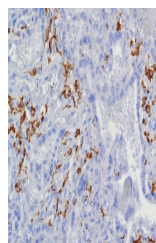
|                            |  |
|----------------------------|--|
| <b>Description</b>         | CD163 is a type I membrane protein, and is a member of the hemoglobin scavenger receptor cystein-ric...                              |
| <b>Species/Host</b>        | Rabbit   |
| <b>Reactivity</b>          | Human  |
| <b>Conjugation</b>         | Unconjugated   |
| <b>Tested Applications</b> | IHC-P  |
| <b>Immunogen</b>           | A recombinant partial protein (within amino acids 956-1156) from the human protein was used as the immunogen for the CD163 antibody. |
| <b>Storage</b>             | Aliquot the CD163 antibody and store frozen at -20°C or colder. Avoid repeated freeze-thaw cycles.                                   |
| <b>Note</b>                | For research use only  |
| <b>Formula</b>             | 1 mg/ml in 1X PBS; BSA free, sodium azide free   |
| <b>Isotype</b>             | Rabbit IgG, kappa  |
| <b>Clonality</b>           | Recombinant  |
| <b>Uniprot ID</b>          | <b>Q86VB7</b>  |
| <b>Hazard Information</b>  | This CD163 antibody is available for research use only.  |
| <b>Dilution Range</b>      | Immunohistochemistry (FFPE): 1-2ug/ml for 30 minutes at RT   |
| <b>Expiration Date</b>     | 12 months from date of receipt.  |



IHC staining of FFPE human ovarian carci...



IHC staining of FFPE human spleen tissue...



IHC staining of FFPE human placental tis...