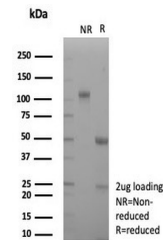


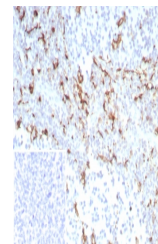
Product Datasheet

CD163 Antibody (orb1825855)

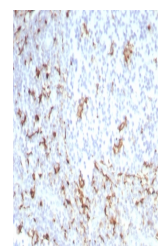
Description	CD163 is a type I membrane protein, and is a member of the hemoglobin scavenger receptor cystein-ric...
Species/Host	Rabbit
Reactivity	Human
Conjugation	Unconjugated
Tested Applications	IHC-P
Immunogen	A recombinant partial protein sequence (within amino acids 956-1156) from the human protein was used as the immunogen for the recombinant CD163 antibody.
Storage	Aliquot the recombinant CD163 antibody and store frozen at -20°C or colder. Avoid repeated freeze-thaw cycles.
Note	For research use only
Formula	0.2 mg/ml in 1X PBS with 0.1 mg/ml BSA (US sourced), 0.05% sodium azide
Isotype	Rabbit IgG, kappa
Clonality	Recombinant
Uniprot ID	Q86VB7
Hazard Information	This recombinant CD163 antibody is available for research use only.
Dilution Range	Immunohistochemistry (FFPE): 1-2ug/ml for 30 minutes at RT
Expiration Date	12 months from date of receipt.



SDS-PAGE analysis of purified, BSA-free ...



IHC staining of FFPE human tonsil tissue...



IHC staining of FFPE human tonsil tissue...