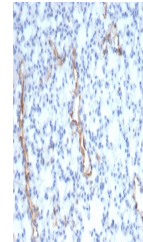


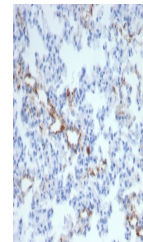
## Product Datasheet

# von Willebrand Factor Antibody / vWF (orb1825843)

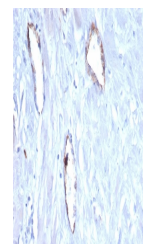
|                            |  |
|----------------------------|--|
| <b>Description</b>         | von Willebrand Factor (vWF) is a multimeric glycoprotein that is found in endothelial cells, plasma ...  |
| <b>Species/Host</b>        | Mouse  |
| <b>Reactivity</b>          | Human, Mouse, Rat  |
| <b>Conjugation</b>         | Unconjugated   |
| <b>Tested Applications</b> | IHC-P  |
| <b>Immunogen</b>           | A recombinant human vWF fragment protein sequence (within amino acids 845-949) was used as the immunogen for the von Willebrand Factor antibody. |
| <b>Storage</b>             | Aliquot the von Willebrand Factor antibody and store frozen at -20°C or colder. Avoid repeated freeze-thaw cycles.                               |
| <b>Note</b>                | For research use only  |
| <b>Formula</b>             | 0.2 mg/ml in 1X PBS with 0.1 mg/ml BSA (US sourced), 0.05% sodium azide  |
| <b>Isotype</b>             | Mouse IgG1, kappa  |
| <b>Clonality</b>           | Monoclonal   |
| <b>Uniprot ID</b>          | <b>P04275</b>  |
| <b>Hazard Information</b>  | This von Willebrand Factor antibody is available for research use only.  |
| <b>Dilution Range</b>      | Immunohistochemistry (FFPE): 1-2ug/ml for 30 minutes at RT   |
| <b>Expiration Date</b>     | 12 months from date of receipt.  |



IHC staining of FFPE mouse lung with vWF...



IHC staining of FFPE rat lung with vWF a...



IHC staining of FFPE human uterus tissue...