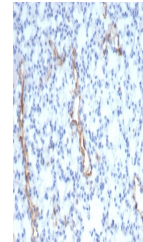


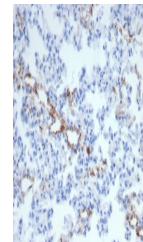
Product Datasheet

von Willebrand Factor Antibody / vWF (orb1825842)

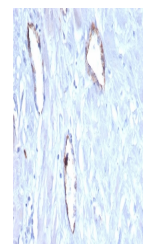
Description	von Willebrand Factor (vWF) is a multimeric glycoprotein that is found in endothelial cells, plasma ...
Species/Host	Mouse
Reactivity	Human, Mouse, Rat
Conjugation	Unconjugated
Tested Applications	IHC-P
Immunogen	A recombinant human vWF fragment protein sequence (within amino acids 845-949) was used as the immunogen for the von Willebrand Factor antibody.
Storage	Aliquot the von Willebrand Factor antibody and store frozen at -20°C or colder. Avoid repeated freeze-thaw cycles.
Note	For research use only
Formula	0.2 mg/ml in 1X PBS with 0.1 mg/ml BSA (US sourced), 0.05% sodium azide
Isotype	Mouse IgG1, kappa
Clonality	Monoclonal
Uniprot ID	P04275
Hazard Information	This von Willebrand Factor antibody is available for research use only.
Dilution Range	Immunohistochemistry (FFPE): 1-2ug/ml for 30 minutes at RT
Expiration Date	12 months from date of receipt.



IHC staining of FFPE mouse lung with vWF...



IHC staining of FFPE rat lung with vWF a...



IHC staining of FFPE human uterus tissue...