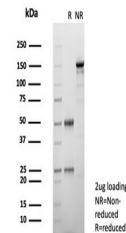


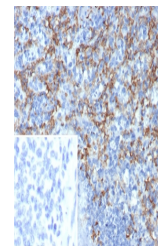
Product Datasheet

CD163L1 Antibody (orb1825836)

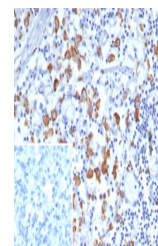
Description	CD163L1 (CD163 molecule-like 1), also known as scavenger receptor cysteine-rich type 1 protein M160 o...
Species/Host	Mouse
Reactivity	Human
Conjugation	Unconjugated
Tested Applications	IHC-P
Immunogen	A recombinant fragment of human CD163L1 protein was used as the immunogen for the CD163L1 antibody.
Storage	Aliquot the CD163L1 antibody and store frozen at -20°C or colder. Avoid repeated freeze-thaw cycles.
Note	For research use only
Formula	0.2 mg/ml in 1X PBS with 0.1 mg/ml BSA (US sourced), 0.05% sodium azide
Isotype	Mouse IgG
Clonality	Monoclonal
Uniprot ID	Q9NR16
Hazard Information	This CD163L1 antibody is available for research use only.
Dilution Range	Immunohistochemistry (FFPE): 1-2ug/ml for 30 minutes at RT
Expiration Date	12 months from date of receipt.



SDS-PAGE analysis of purified, BSA-free ...



IHC staining of FFPE human spleen tissue...



IHC staining of FFPE human lymph node ti...