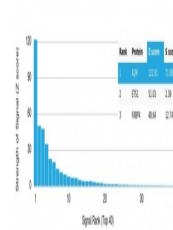


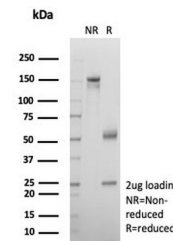
Product Datasheet

A2M Antibody / Alpha-2-Macroglobulin (orb1825828)

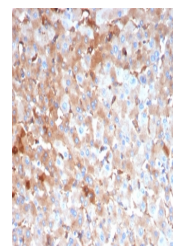
Description	Alpha-2-Macroglobulin (Alpha-2M) is a homotetrameric serum protein consisting of four identical subu...
Species/Host	Mouse
Reactivity	Human
Conjugation	Unconjugated
Tested Applications	IHC-P
Immunogen	A recombinant partial protein sequence (within amino acids 604-748) from the human protein was used as the immunogen for the Alpha-2-Macroglobulin antibody.
Storage	Aliquot the Alpha-2-Macroglobulin antibody and store frozen at -20°C or colder. Avoid repeated freeze-thaw cycles.
Note	For research use only
Formula	0.2 mg/ml in 1X PBS with 0.1 mg/ml BSA (US sourced), 0.05% sodium azide
Isotype	Mouse IgG2b, kappa
Clonality	Monoclonal
Uniprot ID	P01023
Hazard Information	This Alpha-2-Macroglobulin antibody is available for research use only.
Dilution Range	Immunohistochemistry (FFPE): 1-2ug/ml for 30 minutes at RT
Expiration Date	12 months from date of receipt.



Analysis of a HuProt (TM) microarray con...



SDS-PAGE analysis of purified, BSA-free ...



IHC staining of FFPE human hepatocellula...