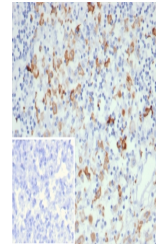


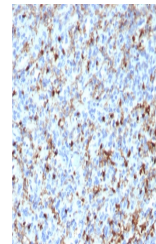
Product Datasheet

CD163L1 Antibody (orb1825816)

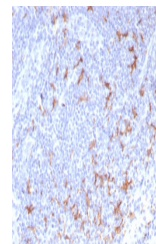
Description	CD163L1 (CD163 molecule-like 1), also known as scavenger receptor cysteine-rich type 1 protein M160 o...
Species/Host	Mouse
Reactivity	Human
Conjugation	Unconjugated
Tested Applications	IHC-P
Immunogen	A recombinant fragment of human CD163L1 protein was used as the immunogen for the CD163L1 antibody.
Storage	Aliquot the CD163L1 antibody and store frozen at -20°C or colder. Avoid repeated freeze-thaw cycles.
Note	For research use only
Formula	0.2 mg/ml in 1X PBS with 0.1 mg/ml BSA (US sourced), 0.05% sodium azide
Isotype	Mouse IgG
Clonality	Monoclonal
Uniprot ID	Q9NR16
Hazard Information	This CD163L1 antibody is available for research use only.
Dilution Range	Immunohistochemistry (FFPE): 1-2ug/ml for 30 minutes at RT
Expiration Date	12 months from date of receipt.



IHC staining of FFPE human lymph node ti...



IHC staining of FFPE human spleen tissue...



IHC staining of FFPE human tonsil tissue...