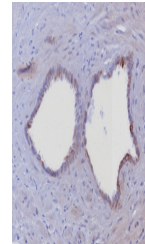


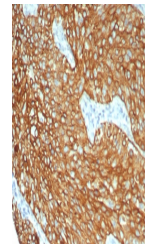
## Product Datasheet

### Keratin 6 Antibody / Cytokeratin 6 (orb1825715)

<b>Description</b>	Cytokeratin 6 is an epidermis-specific type I keratin involved in wound healing. Involved in the act...
<b>Species/Host</b>	Rabbit
<b>Reactivity</b>	Human
<b>Conjugation</b>	Unconjugated
<b>Tested Applications</b>	IHC-P
<b>Immunogen</b>	A recombinant partial protein (within amino acids 1-200) from the human protein was used as the immunogen for the Cytokeratin 6 antibody.
<b>Storage</b>	Aliquot the Cytokeratin 6 antibody and store frozen at -20°C or colder. Avoid repeated freeze-thaw cycles.
<b>Note</b>	For research use only
<b>Formula</b>	1 mg/ml in 1X PBS; BSA free, sodium azide free
<b>Isotype</b>	Rabbit IgG, kappa
<b>Clonality</b>	Recombinant
<b>Uniprot ID</b>	<b>P02538</b>
<b>Hazard Information</b>	This Cytokeratin 6 antibody is available for research use only.
<b>Dilution Range</b>	Immunohistochemistry (FFPE): 1-2ug/ml
<b>Expiration Date</b>	12 months from date of receipt.



IHC staining of FFPE human prostate tiss...



IHC staining of FFPE human lung tissue w...