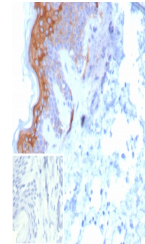


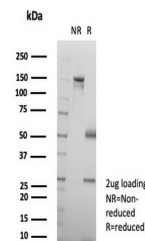
Product Datasheet

Keratin 6 Antibody / Cytokeratin 6 (orb1825710)

Description	Cytokeratin 6 is an epidermis-specific type I keratin involved in wound healing. Involved in the act...
Species/Host	Rabbit
Reactivity	Human
Conjugation	Unconjugated
Tested Applications	IHC-P
Immunogen	A recombinant partial protein (within amino acids 1-200) from the human protein was used as the immunogen for the KRT6 antibody.
Storage	Aliquot the KRT6 antibody and store frozen at -20°C or colder. Avoid repeated freeze-thaw cycles.
Note	For research use only
Formula	0.2 mg/ml in 1X PBS with 0.1 mg/ml BSA (US sourced), 0.05% sodium azide
Isotype	Rabbit IgG, kappa
Clonality	Recombinant
Uniprot ID	P02538
Hazard Information	This KRT6 antibody is available for research use only.
Dilution Range	Immunohistochemistry (FFPE): 1-2ug/ml
Expiration Date	12 months from date of receipt.



IHC staining of FFPE human skin tissue w...



SDS-PAGE analysis of purified, BSA-free ...