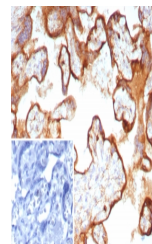


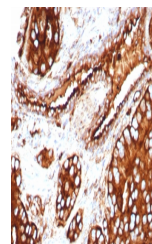
Product Datasheet

CD63 Antibody / LAMP-3 (orb1825698)

Description	This mAb recognizes protein of 26kDa-60kDa, which is identified as CD63. Its epitope is different fr...
Species/Host	Rabbit
Reactivity	Human
Conjugation	Unconjugated
Tested Applications	IHC-P
Immunogen	Recombinant full-length human protein was used as the immunogen for the CD63 antibody. This mAb recognizes an extracellular epitope.
Storage	Aliquot the CD63 antibody and store frozen at -20°C or colder. Avoid repeated freeze-thaw cycles.
Note	For research use only
Formula	0.2 mg/ml in 1X PBS with 0.1 mg/ml BSA (US sourced), 0.05% sodium azide
Isotype	Rabbit IgG, kappa
Clonality	Recombinant
Uniprot ID	P08962
Hazard Information	This CD63 antibody is available for research use only.
Dilution Range	Immunohistochemistry (FFPE): 1-2ug/ml for 30 minutes at RT
Expiration Date	12 months from date of receipt.



IHC staining of FFPE human placental tis...



IHC staining of FFPE human prostate tiss...