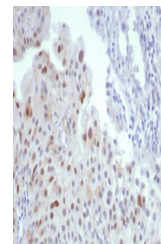


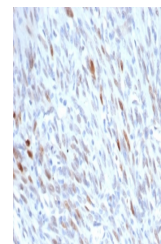
Product Datasheet

MDM2 Antibody (orb1825690)

Description	MDM2 is a nuclear phosphoprotein that binds and inhibits transactivation by tumor protein p53. It ca...
Species/Host	Rabbit
Reactivity	Human
Conjugation	Unconjugated
Tested Applications	IHC-P
Immunogen	A recombinant human MDM2 protein fragment was used as the immunogen for the MDM2 antibody.
Storage	Aliquot the MDM2 antibody and store frozen at -20°C or colder. Avoid repeated freeze-thaw cycles.
Note	For research use only
Formula	0.2 mg/ml in 1X PBS with 0.1 mg/ml BSA (US sourced), 0.05% sodium azide
Isotype	Rabbit IgG, kappa
Clonality	Recombinant
Uniprot ID	Q00987
Hazard Information	This MDM2 antibody is available for research use only.
Dilution Range	Immunohistochemistry (FFPE): 1-2ug/ml
Expiration Date	12 months from date of receipt.



IHC staining of FFPE human bladder tissu...



IHC staining of FFPE human liposarcoma t...