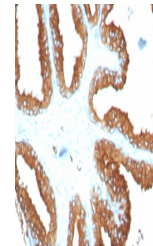


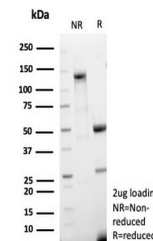
Product Datasheet

CD63 Antibody / LAMP-3 (orb1825687)

Description	This mAb recognizes protein of 26kDa-60kDa, which is identified as CD63. Its epitope is different fr...
Species/Host	Rabbit
Reactivity	Human
Conjugation	Unconjugated
Tested Applications	IHC-P
Immunogen	Recombinant full-length human protein was used as the immunogen for the recombinant LAMP-3 antibody. Its epitope is different from that of mAb LAMP3/529.
Storage	Aliquot the recombinant LAMP-3 antibody and store frozen at -20°C or colder. Avoid repeated freeze-thaw cycles.
Note	For research use only
Formula	0.2 mg/ml in 1X PBS with 0.1 mg/ml BSA (US sourced), 0.05% sodium azide
Isotype	Rabbit IgG, kappa
Clonality	Recombinant
Uniprot ID	P08962
Hazard Information	This recombinant LAMP-3 antibody is available for research use only.
Dilution Range	Immunohistochemistry (FFPE): 1-2ug/ml for 30 minutes at RT
Expiration Date	12 months from date of receipt.



IHC staining of FFPE human tonsil tissue...



SDS-PAGE analysis of purified, BSA-free ...