

---

## Product Datasheet

**CD162 Antibody / P selectin glycoprotein ligand 1 /  
PSGL-1 (orb1825634)**

**Description**

CD162 glycoprotein functions as a high affinity


**Species/Host**

P-,...

Rabbit

**Reactivity**

Human

**Conjugation**

Unconjugated

**Tested Applications**

IHC-P

IHC staining of FFPE human tonsil tissue...

**Immunogen**

Recombinant full-length human protein was used as the immunogen for the CD162 antibody.

**Storage**

Aliquot the CD162 antibody and store frozen at -20°C or colder. Avoid repeated freeze-thaw cycles.

**Note**

For research use only

**Formula**

1 mg/ml in 1X PBS; BSA free, sodium azide free

**Isotype**

Rabbit IgG, kappa

**Clonality**

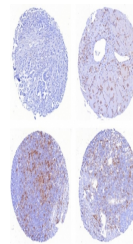
Recombinant

**Uniprot ID**

[Q14242](#)

**Hazard Information**

This CD162 antibody is available for research use only.



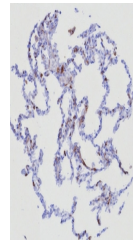
IHC staining of FFPE human (1) mammary c...

**Dilution Range**

Immunohistochemistry (FFPE): 1-2ug/ml for 30 minutes at RT

**Expiration Date**

12 months from date of receipt.



IHC staining of FFPE human lung tissue w...