
Product Datasheet

**CD162 Antibody / P selectin glycoprotein ligand 1 /
PSGL-1 (orb1825633)**

Description

CD162 glycoprotein functions as a high affinity

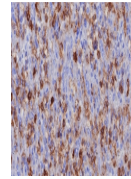

Species/Host

P-,...

Rabbit

Reactivity

Human


Conjugation

Unconjugated

Tested Applications

IHC-P

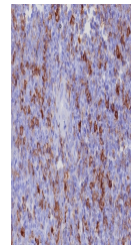
IHC staining of FFPE human spleen tissue...

Immunogen

Recombinant full-length human protein was used as the immunogen for the PSGL-1 antibody.

Storage

Aliquot the PSGL-1 antibody and store frozen at -20°C or colder. Avoid repeated freeze-thaw cycles.


Note

For research use only

Formula

0.2 mg/ml in 1X PBS with 0.1 mg/ml BSA (US sourced), 0.05% sodium azide

Isotype

Rabbit IgG, kappa

Clonality

Recombinant

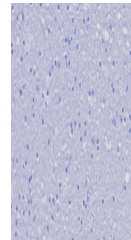
Uniprot ID
[Q14242](#)
Hazard Information

This PSGL-1 antibody is available for research use only.

IHC staining of FFPE human tonsil tissue...

Dilution Range

Immunohistochemistry (FFPE): 1-2ug/ml for 30 minutes at RT


Expiration Date

12 months from date of receipt.

Negative control: IHC testing of FFPE hu...