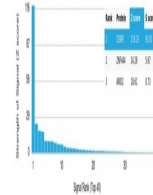


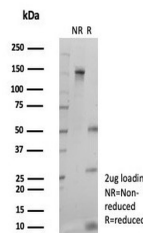
Product Datasheet

C/EBP epsilon Antibody / CEBPE (orb1825575)

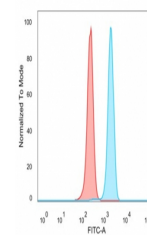
Description	The transcription factor C/EBP Alpha (CCAAT-enhancer binding protein) is a heatstable, sequence-spec...
Species/Host	Mouse
Reactivity	Human
Conjugation	Unconjugated
Tested Applications	FACS, IF
Immunogen	Recombinant human protein was used as the immunogen for the C/EBP epsilon antibody.
Storage	Aliquot the C/EBP epsilon antibody and store frozen at -20°C or colder. Avoid repeated freeze-thaw cycles.
Note	For research use only
Formula	0.2 mg/ml in 1X PBS with 0.1 mg/ml BSA (US sourced), 0.05% sodium azide
Isotype	Mouse IgG2a
Clonality	Monoclonal
Uniprot ID	Q15744
Hazard Information	This C/EBP epsilon antibody is available for research use only.
Dilution Range	Flow cytometry: 1-2ug/million cells, Immunofluorescence: 1-2ug/ml
Expiration Date	12 months from date of receipt.



Analysis of a HuProt (TM) microarray con...



SDS-PAGE analysis of purified, BSA-free ...



Flow cytometry testing of PFA-fixed huma...