

## Product Datasheet

### IgD Heavy Chain Antibody (orb1825562)

**Description** Immunoglobulins are four-chain, Y-shaped, monomeric structures comprised of two identical heavy chain...

**Species/Host** Rabbit

**Reactivity** Human

**Conjugation** Unconjugated

**Tested Applications** IHC-P

**Immunogen** A recombinant partial protein sequence (within amino acids 1-200) from the human protein was used as the immunogen for the recombinant IgD Heavy Chain antibody.

**Storage** Aliquot the recombinant IgD Heavy Chain antibody and store frozen at -20°C or colder. Avoid repeated freeze-thaw cycles.

**Note** For research use only

**Formula** 1 mg/ml in 1X PBS; BSA free, sodium azide free

**Isotype** Rabbit IgG, kappa

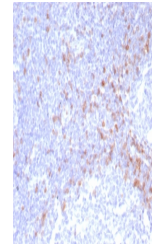
**Clonality** Recombinant

**Uniprot ID** **P01880**

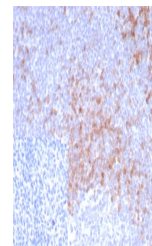
**Hazard Information** This recombinant IgD Heavy Chain antibody is available for research use only.

**Dilution Range** Immunohistochemistry (FFPE): 1-2ug/ml for 30 minutes at RT

**Expiration Date** 12 months from date of receipt.



IHC staining of FFPE human tonsil tissue...



IHC staining of FFPE human tonsil tissue...