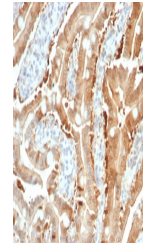


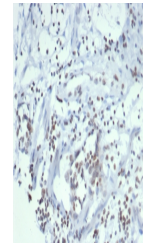
Product Datasheet

SULT1E1 Antibody / Estrogen Sulfotransferase (orb1825549)

Description	The soluble sulfotransferases contribute to the elimination of xenobiotics, the activation of procar...
Species/Host	Mouse
Reactivity	Human
Conjugation	Unconjugated
Tested Applications	IHC-P, WB
Immunogen	A recombinant partial protein sequence (within amino acids 100-294) from the human protein was used as the immunogen for the Estrogen Sulfotransferase antibody.
Storage	Aliquot the Estrogen Sulfotransferase antibody and store frozen at -20°C or colder. Avoid repeated freeze-thaw cycles.
Note	For research use only
Formula	0.2 mg/ml in 1X PBS with 0.1 mg/ml BSA (US sourced), 0.05% sodium azide
Isotype	Mouse IgG2, kappa
Clonality	Monoclonal
Uniprot ID	P49888
Hazard Information	This Estrogen Sulfotransferase antibody is available for research use only.
Dilution Range	Western blot: 1-2ug/ml, Immunohistochemistry (FFPE): 1-2ug/ml for 30 minutes at RT
Expiration Date	12 months from date of receipt.



IHC staining of FFPE human small intestine...



IHC staining of FFPE human ovarian carcinoma...