

Product Datasheet

SULT1E1 Antibody / Estrogen Sulfotransferase (orb1825548)

Description The soluble sulfotransferases contribute to the elimination of xenobiotics, the activation of procar...

Species/Host Mouse

Reactivity Human

Conjugation Unconjugated

Tested Applications IHC-P, WB

Immunogen A recombinant partial protein sequence (within amino acids 100-294) from the human protein was used as the immunogen for the Estrogen Sulfotransferase antibody.

Storage Aliquot the Estrogen Sulfotransferase antibody and store frozen at -20°C or colder. Avoid repeated freeze-thaw cycles.

Note For research use only

Formula 0.2 mg/ml in 1X PBS with 0.1 mg/ml BSA (US sourced), 0.05% sodium azide

Isotype Mouse IgG2, kappa

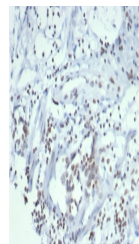
Clonality Monoclonal

Uniprot ID **P49888**

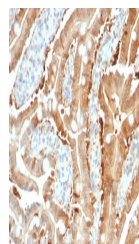
Hazard Information This Estrogen Sulfotransferase antibody is available for research use only.

Dilution Range Western blot: 1-2ug/ml, Immunohistochemistry (FFPE): 1-2ug/ml for 30 minutes at RT

Expiration Date 12 months from date of receipt.



IHC staining of FFPE human ovarian carci...



IHC staining of FFPE human small intesti...