
Product Datasheet

**Alpha 1 Antitrypsin Antibody / AAT / SERPINA1
(orb1825512)**

Description

It recognizes a protein of 54kDa, which is identified


Species/Host

Mouse

Reactivity

Human

Conjugation

Unconjugated

Tested Applications

IHC-P

IHC staining of FFPE human tonsil tissue...

Immunogen

A recombinant partial protein sequence (within amino acids 200-400) from the human protein was used as the immunogen for the SERPINA1 antibody.

Storage

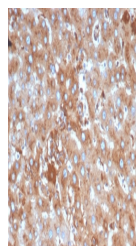
Aliquot the SERPINA1 antibody and store frozen at -20°C or colder. Avoid repeated freeze-thaw cycles.

Note

For research use only

Formula

0.2 mg/ml in 1X PBS with 0.1 mg/ml BSA (US sourced), 0.05% sodium azide


Isotype

Mouse IgG1, kappa

IHC staining of FFPE human liver in colo...

Clonality

Monoclonal

Uniprot ID

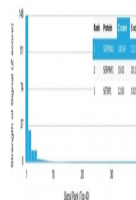
P01009

Hazard Information

This SERPINA1 antibody is available for research use only.

Dilution Range

Immunohistochemistry (FFPE): 1-2ug/ml for 30 minutes at RT


Expiration Date

12 months from date of receipt.

Analysis of a HuProt (TM) microarray con...