
Product Datasheet

**Alpha 1 Antitrypsin Antibody / AAT / SERPINA1
(orb1825511)**

Description

It recognizes a protein of 54kDa, which is identified


Species/Host

Mouse

Reactivity

Human

Conjugation

Unconjugated

Tested Applications

IHC-P

IHC staining of FFPE human tonsil tissue...

Immunogen

A recombinant partial protein sequence (within amino acids 200-400) from the human protein was used as the immunogen for the SERPINA1 antibody.

Storage

Aliquot the SERPINA1 antibody and store frozen at -20°C or colder. Avoid repeated freeze-thaw cycles.

Note

For research use only

Formula

1 mg/ml in 1X PBS; BSA free, sodium azide free

Isotype

Mouse IgG1, kappa

Clonality

Monoclonal

Uniprot ID

P01009

Hazard Information

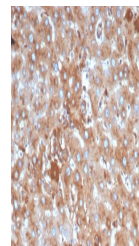
This SERPINA1 antibody is available for research use only.

Dilution Range

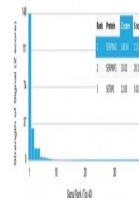
Immunohistochemistry (FFPE): 1-2ug/ml for 30 minutes at RT

Expiration Date

12 months from date of receipt.



IHC staining of FFPE human liver in colo...



Analysis of a HuProt (TM) microarray con...