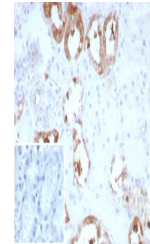


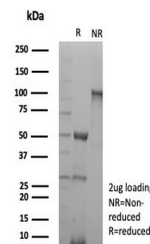
## Product Datasheet

### CKB Antibody / Creatine kinase B (orb1825507)

|                            |   |
|----------------------------|---|
| <b>Description</b>         | Creatine kinases (CK) are a large family of isoenzymes that regulate levels of ATP in subcellular co...                       |
| <b>Species/Host</b>        | Mouse   |
| <b>Reactivity</b>          | Human   |
| <b>Conjugation</b>         | Unconjugated  |
| <b>Tested Applications</b> | ELISA, IHC-P, WB  |
| <b>Immunogen</b>           | Recombinant human full-length protein was used as the immunogen for the recombinant CKB antibody.                             |
| <b>Storage</b>             | Aliquot the recombinant CKB antibody and store frozen at -20°C or colder. Avoid repeated freeze-thaw cycles.                  |
| <b>Note</b>                | For research use only   |
| <b>Formula</b>             | 0.2 mg/ml in 1X PBS with 0.1 mg/ml BSA (US sourced), 0.05% sodium azide   |
| <b>Isotype</b>             | Mouse IgG1, kappa   |
| <b>Clonality</b>           | Recombinant   |
| <b>Uniprot ID</b>          | <a href="#">P12277</a>  |
| <b>Hazard Information</b>  | This recombinant CKB antibody is available for research use only.   |
| <b>Dilution Range</b>      | ELISA (Order BSA-free format for coating), Western blot: 1-2ug/ml, Immunohistochemistry (FFPE): 1-2ug/ml for 30 minutes at RT |
| <b>Expiration Date</b>     | 12 months from date of receipt.   |



IHC staining of FFPE human kidney tissue...



SDS-PAGE analysis of purified, BSA-free ...