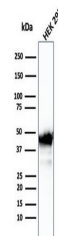


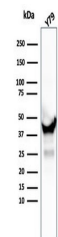
Product Datasheet

CKB Antibody / Creatine kinase B (orb1825473)

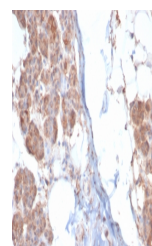
Description	Creatine kinases (CK) are a large family of isoenzymes that regulate levels of ATP in subcellular co...
Species/Host	Mouse
Reactivity	Human
Conjugation	Unconjugated
Tested Applications	ELISA, IHC-P, WB
Immunogen	Recombinant human full-length protein was used as the immunogen for the Creatine kinase B antibody.
Storage	Aliquot the Creatine kinase B antibody and store frozen at -20°C or colder. Avoid repeated freeze-thaw cycles.
Note	For research use only
Formula	0.2 mg/ml in 1X PBS with 0.1 mg/ml BSA (US sourced), 0.05% sodium azide
Isotype	Mouse IgG1, kappa
Clonality	Monoclonal
Uniprot ID	P12277
Hazard Information	This Creatine kinase B antibody is available for research use only.
Dilution Range	ELISA (Order BSA-free format for coating),Western blot: 1-2ug/ml,Immunohistochemistry (FFPE): 1-2ug/ml for 30 minutes at RT
Expiration Date	12 months from date of receipt.



Western blot testing of human HEK293 cel...



Western blot testing of human Y79 cell l...



IHC staining of FFPE human salivary glan...