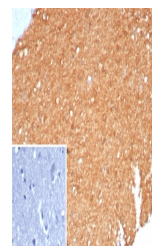


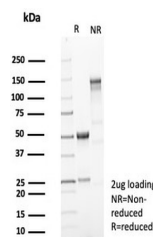
## Product Datasheet

### CKB Antibody / Creatine kinase B (orb1825454)

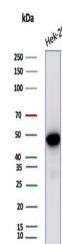
<b>Description</b>	Creatine kinases (CK) are a large family of isoenzymes that regulate levels of ATP in subcellular co...
<b>Species/Host</b>	Rabbit
<b>Reactivity</b>	Human
<b>Conjugation</b>	Unconjugated
<b>Tested Applications</b>	IHC-P, WB
<b>Immunogen</b>	Recombinant human full-length protein was used as the immunogen for the recombinant Brain Creatine Kinase antibody.
<b>Storage</b>	Aliquot the recombinant Brain Creatine Kinase antibody and store frozen at -20°C or colder. Avoid repeated freeze-thaw cycles.
<b>Note</b>	For research use only
<b>Formula</b>	1 mg/ml in 1X PBS; BSA free, sodium azide free
<b>Isotype</b>	Rabbit IgG, kappa
<b>Clonality</b>	Recombinant
<b>Uniprot ID</b>	<b>P12277</b>
<b>Hazard Information</b>	This recombinant Brain Creatine Kinase antibody is available for research use only.
<b>Dilution Range</b>	Western blot: 1-2ug/ml, Immunohistochemistry (FFPE): 1-2ug/ml for 30 minutes at RT
<b>Expiration Date</b>	12 months from date of receipt.



IHC staining of FFPE human brain tissue ...



SDS-PAGE analysis of purified, BSA-free ...



Western blot testing of human HEK293 cel...